



Document : Factory Acceptance Test report
Client :
Project : Solar Energy System
PO no. :
TSS Reference :

Rev	Date	Description	Prepared	Checked
00				
01				
02				



Contents

- 1 Safety..... 3
- 2 General Information..... 3
 - 2.1 Reference documents 3
 - 2.2 Test and measuring equipment for FAT 4
 - 2.3 Calibration certificates 4
- 3 Heat Soak Test 5
 - 3.1 Scope 5
 - 3.2 Test description 5
 - 3.3 Test set-up..... 5
 - 3.4 Test schedule..... 6
 - 3.5 Test criteria 6
- 4 Visual Inspection..... 6
 - 4.1 Control Box (CB) 6
 - 4.2 Distribution Box (DB) 8
 - 4.3 Battery Circuit breaker Box (BCB) 9
 - 4.4 Array Combiner Box (ACB) / Sub Array Junction Box (SAJB) 10
- 5 Main Functional Checks..... 11
 - 5.1 Battery temperature/voltage sensor functional check 11
 - 5.2 Σ -Ahr PWM Controller(s) calibration check 12
 - 5.3 Σ -Ahr PWM Controller(s) functional check..... 15
 - 5.4 Circuit breaker and switch functional check 16
 - 5.5 **Interchangeability Test**..... 16
- 6 Ancillary Functional Checks..... 17
 - 6.1 Transducer functional check..... 17
 - 6.2 Σ -Ahr Graphic Data Manager / Σ -Ahr SmartView functional check 18
 - 6.3 Alarm relay signals functional check 18
 - 6.4 Other functional check 20
 - 6.5 Dielectric voltage withstand test 20
- 7 Outstanding Items/Punch List 21

8 FAT Approval Summary 22

1 Safety

Take the required safety precautions before starting the test.

2 General Information

This document elaborates the activities that are carried out during the Factory Acceptance Test (FAT). It is also intended to register the outcomes of the activities and validate the functional requirements of the Solar Energy System (SES).

Visual inspection will be carried out on all the enclosures as per approved Inspection & Test Plan (ITP). Functional and performance checks of the SES will be performed as per approved ITP on all the control equipment of **one (typical) SES**.

Note: Mechanical structures or a complete SES will not be assembled for the FAT. Solar array (series of PV modules) and battery are simulated by DC power supplies.

2.1 Reference documents

Reference documents must be approved without comments by client before performing FAT.

The reference documents used during FAT are:

Document No.	Rev.	Document title
		Inspection & Test Plan (ITP)
		Component data sheets
		Single line diagram
		Circuit diagram array junction box
		Circuit diagram array combiner box
		Circuit diagram control box
		Circuit diagram battery circuit breaker box
		Circuit diagram distribution box

2.2 Test and measuring equipment for FAT

The equipment that will be used during FAT consists of:

- 2 pcs. DC power supply 0-24A dc/0-70V dc
- 2 pcs. Digital multi meter (CAT IV 600 V) including test leads/cables
- 1 pc. Current clamp meter (with minimum 0-300A dc range)
- 1 pc. Insulation tester with 50Vdc and 1000Vdc range (for 24V and 48V systems)
- 1 pc. Load bank (with resistors of 300W @ 30Vdc)
- 1 pc. Temperature sensor simulation device 10°C - 50°C (in steps of 10°C)
- 1 set Cables and accessories (for testing control equipment)
- 1 pc. 560Ω resistor (for earth fault simulation)
- 1 pc. Toolkit (spanners, screwdriver, measure lint, etc.)

2.3 Calibration certificates

Summary of valid calibration certificates for all measuring instruments:

Measuring instrument	Type	Serial No.	Date	
			Calibration	Expiry
Digital multi meter				
Digital multi meter				
Current clamp meter (0-300A DC)				
Insulation tester				

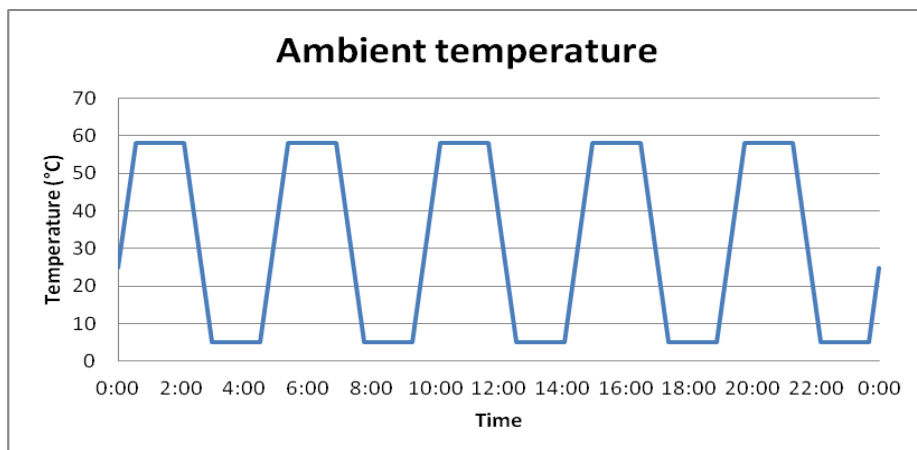
3 Heat Soak Test

3.1 Scope

In order to check if the Charge controller is able to operate at all times, a heat soak test will be performed. The charge controller must continue to operate with environmental temperatures from **4°C to 55°C** while delivering the nominal output power. This section describes the test procedure and set-up for the heat soak test.

3.2 Test description

The Charge Controller unit will be placed in a climate chamber for 24 hours. During the test, the temperature will complete five cycles between **4°C and 55°C**. This means each cycle will take just under five hours. The temperature will rise and fall at a rate of approx. one degree a minute. The graph below shows the temperature change in the climate chamber during the test.



3.3 Test set-up

The Charge Controller will be installed and tested in the climate chamber.

PV modules and batteries will be simulated by DC power supplies.

The system load will be simulated by connecting resistor banks on the output.

The table below shows the minimum tested input currents, input voltage, battery current and load current for the tested charge controller during the heat soak test for 24 hours. Values indicated are as per the datasheet of the Σ-Ahr PWM Controller

In/Output charge controller	Nominal charge controller values	Minimum values during test	Remarks	Check OK
Charge controller output max.	90 A	-		<input type="checkbox"/>

System voltage	24V/48V	-		<input type="checkbox"/>
Nominal input current (simulated solar modules)	134 A	-		<input type="checkbox"/>
Input voltage (simulated batteries)	26V/52V	±2V/±4V		<input type="checkbox"/>
Current to battery	-	-		<input type="checkbox"/>

3.4 Test schedule

The table below shows the schedule for the heat soak testing of the system. The duration of the complete heat soak test for the charge controller, including set-up and clean-up, will be two days.

Task	Duration	Begin	End
Set-up of the test	1 hrs	Day 1, 9:00	Day 1, 10:00
Heat soak test	24 hrs	Day 1, 10:00	Day 2, 10:00
Removing test set-up	1 hr	Day 2, 10:00	Day 2, 11:00

3.5 Test criteria

The Charge Controller passes the test if at the end of the test the following criteria are met:

- Input and output currents are not changed.
- Arrays are switched on and off.
- Load output is switched on and off.

Unit	Article No. / Serial No.	Passed test
Σ-Ahr PWM Controller	-	<input type="checkbox"/>

4 Visual Inspection

In order to assess the quality of the manufactured control equipment/enclosure a visual inspection will be carried out. Each control equipment/enclosure used in the solar energy system is subjected to inspection.

4.1 Control Box (CB)

#	Description	Remarks	Action Y/N, by	Check OK
---	-------------	---------	----------------	----------

1	Check identification plate(s), general appearance and condition (undamaged).			<input type="checkbox"/>
2	Check if identification numbers on components, terminals and wires are according the respective drawings.			<input type="checkbox"/>
3	Check if enclosure window is properly installed.			
4	Check if all wires are terminated properly and that there are no loose connections.			<input type="checkbox"/>
5	Check if enclosure and internal components are well accessible for operation and maintenance.			<input type="checkbox"/>
6	Check if circuit breakers are pad-lockable in off position (if applicable).			<input type="checkbox"/>
7	Check if enclosure grounding/internal earthing is properly installed.			<input type="checkbox"/>
8	Check if cable gland/stopper plug sizes are according the respective drawings.			<input type="checkbox"/>
9	Check if sufficient space is available for termination of external cable(s) and that terminals are suitable for the cable size(s).			<input type="checkbox"/>

4.2 Distribution Box (DB)

#	Description	Remarks	Action Y/N, by	Check OK
1	Check identification plate(s), general appearance and condition (undamaged).			<input type="checkbox"/>
2	Check if identification numbers on components, terminals and wires are according the respective drawings.			<input type="checkbox"/>
3	Check if all wires are terminated properly and that there are no loose connections.			<input type="checkbox"/>
4	Check if enclosure and internal components are well accessible for operation and maintenance.			<input type="checkbox"/>
5	Check if circuit breakers are pad-lockable in off position (if applicable).			<input type="checkbox"/>
6	Check if enclosure grounding/internal earthing is properly installed.			<input type="checkbox"/>
7	Check if cable gland/stopper plug sizes are according the respective drawings.			<input type="checkbox"/>
8	Check if sufficient space is available for termination of external cable(s) and that terminals are suitable for the cable size(s).			<input type="checkbox"/>

4.3 Battery Circuit breaker Box (BCB)

#	Description	Remarks	Action Y/N, by	Check OK
1	Check identification plate(s), general appearance and condition (undamaged).			<input type="checkbox"/>
2	Check if identification numbers on components, terminals and wires are according the respective drawings.			<input type="checkbox"/>
3	Check if all wires are terminated properly and that there are no loose connections.			<input type="checkbox"/>
4	Check if enclosure and internal components are well accessible for operation and maintenance.			<input type="checkbox"/>
5	Check if circuit breakers are pad-lockable in off position (if applicable).			<input type="checkbox"/>
6	Check if enclosure grounding/internal earthing is properly installed.			<input type="checkbox"/>
7	Check if cable gland/stopper plug sizes are according the respective drawings.			<input type="checkbox"/>
8	Check if sufficient space is available for termination of external cable(s) and that terminals are suitable for the cable size(s).			<input type="checkbox"/>

4.4 Array Combiner Box (ACB) / Sub Array Junction Box (SAJB)

#	Description	Remarks	Action Y/N, by	Check OK
1	Check identification plate(s), general appearance and condition (undamaged).			<input type="checkbox"/>
2	Check if identification numbers on components, terminals and wires are according the respective drawings.			<input type="checkbox"/>
3	Check if all wires are terminated properly and that there are no loose connections.			<input type="checkbox"/>
4	Check if enclosure and internal components are well accessible for operation and maintenance.			<input type="checkbox"/>
5	Check if circuit breakers are pad-lockable in off position (if applicable).			<input type="checkbox"/>
6	Check if enclosure grounding/internal earthing is properly installed.			<input type="checkbox"/>
7	Check if cable gland/stopper plug sizes are according the respective drawings.			<input type="checkbox"/>
8	Check if sufficient space is available for termination of external cable(s) and that terminals are suitable for the cable size(s).			<input type="checkbox"/>

5 Main Functional Checks

In order to verify the functionalities of the solar energy system a functional check is performed on the main components. For this the solar modules, the batteries, the battery temperature sensor and the load will be simulated.

The solar array and the battery bank are simulated by making use of two power supplies connected to the respective input terminal of the Σ -Ahr PWM Controller.

The battery temperature is simulated by making use of a temperature sensor simulation device directly connected to the input terminal of the temperature sensor.

The load is simulated by making use of a resistor bank connected to the solar energy system output.

The functional checks will be performed on the following enclosures.

Description	Serial No.
Control Box (CB)	
Battery Circuit Breaker Box (BCB)	
Distribution Box (DB)	
Sub Array Junction Box (SAJB) / Array Combiner Box (ACB)	

5.1 Battery temperature/voltage sensor functional check

Check the temperature sensor voltage on the voltage/temperature sensor input terminals where the temperature sensor simulation device is connected set at 25°C. Set the power supply that simulates the battery at approximately 26V/52V.

Voltage (Isolators closed)	Displayed (Isolators closed) (if applicable)	Check OK
2.00V \pm 0.1V	25°C \pm 3°C	<input type="checkbox"/>

Check battery voltage when connected to Σ -Ahr PWM Controller (simulated battery voltage)	Check OK
Voltage sensor [V]	<input type="checkbox"/>
Displayed [V] (if applicable)	<input type="checkbox"/>

5.2 Σ -Ahr PWM Controller(s) calibration check

Perform the Σ -Ahr PWM Controller calibration check. Use the power supply that simulates the battery to check the switching of all set points. Modulate the voltage to reach each of the set points.

#	Σ -Ahr PWM Controller calibration				Check OK
	Description	Value [V]	Limits		
			NiCd	Tolerance	
1	Load disconnected alarm (System high voltage)		31.50 V	±200 mV	<input type="checkbox"/>
2	Battery charged (Boost charge voltage)		28.50 V		<input type="checkbox"/>
3	Sub array disconnected (Float/equalisation charge voltage)				<input type="checkbox"/>
4	Low battery voltage alarm* (Pre-warning alarm)		23.00 V		<input type="checkbox"/>
5	Load disconnected alarm* (System low voltage alarm)		21.85 V		<input type="checkbox"/>

* Time delay for load disconnected alarm and low battery voltage alarm is approximately 10 sec.

#	Σ -Ahr PWM Controller calibration				Check OK
	Description	Value [V]	Limits		
			NiCd	Tolerance	
1	Load disconnected alarm (System high voltage)		63.00 V	±400 mV	<input type="checkbox"/>
2	Battery charged (Boost charge voltage)		57.00 V		<input type="checkbox"/>
3	Sub array disconnected (Float/equalisation charge voltage)				<input type="checkbox"/>
4	Low battery voltage alarm* (Pre-warning alarm)		46.00 V		<input type="checkbox"/>
5	Load disconnected alarm* (System low voltage alarm)		43.70 V		<input type="checkbox"/>

* Time delay for load disconnected alarm and low battery voltage alarm is approximately 10 sec.

#	Σ-Ahr PWM Controller calibration				Check OK
	Description	Value [V]	Limits		
			Lead-Acid	Tolerance	
1	Load disconnected alarm (System high voltage)		30.50 V	±200 mV	<input type="checkbox"/>
2	Battery charged (Boost charge voltage)		28.80 V**		<input type="checkbox"/>
3	Sub array 1 disconnected (Float/equalisation charge voltage)		28.20 V**		<input type="checkbox"/>
4	Low battery voltage alarm* (Pre-warning alarm)		23.60 V		<input type="checkbox"/>
5	Load disconnected alarm* (System low voltage alarm)		23.00 V		<input type="checkbox"/>

* Time delay for load disconnected alarm and low battery voltage alarm is approximately 10 sec.

** Calibration voltage level at 25°C.

#	Σ-Ahr PWM Controller calibration				Check OK
	Description	Value [V]	Limits		
			Lead-Acid	Tolerance	
1	Load disconnected alarm (System high voltage)		61.00 V	±400 mV	<input type="checkbox"/>
2	Battery charged (Boost charge voltage)		57.60 V**		<input type="checkbox"/>
3	Sub array 1 disconnected (Float/equalisation charge voltage)		56.40 V**		<input type="checkbox"/>
4	Low battery voltage alarm* (Pre-warning alarm)		47.20 V		<input type="checkbox"/>
5	Load disconnected alarm* (System low voltage alarm)		46.00 V		<input type="checkbox"/>

* Time delay for load disconnected alarm and low battery voltage alarm is approximately 10 sec.

** Calibration voltage level at 25°C.

For Lead-Acid only

#	Σ-Ahr PWM Controller temperature compensation					Check OK
	Description	Value		Limits*	Tolerance	
		°C	V			
1	Simulated temperature for boost charge voltage			10°C = 29.34V 20°C = 28.98V 30°C = 28.62V 40°C = 28.26V 50°C = 27.90V	± 200 mV	<input type="checkbox"/>
2	Simulated temperature for float voltage			10°C = 28.74V 20°C = 28.38V 30°C = 28.02V 40°C = 27.66V 50°C = 27.30V		<input type="checkbox"/>

* Temperature compensation is -36mV/°C.

#	Σ-Ahr PWM Controller temperature compensation					Check OK
	Description	Value		Limits*	Tolerance	
		°C	V			
1	Simulated temperature for boost charge voltage			10°C = 58.68V 20°C = 57.96V 30°C = 57.24V 40°C = 56.52V 50°C = 55.80V	± 400 mV	<input type="checkbox"/>
2	Simulated temperature for float voltage			10°C = 57.48V 20°C = 56.76V 30°C = 56.04V 40°C = 55.32V 50°C = 54.60V		<input type="checkbox"/>

* Temperature compensation is -72mV/°C.

5.3 Σ-Ahr PWM Controller(s) functional check

Perform the battery charged/discharge simulation check on the Σ-Ahr Controller(s) as described below.

Set the battery power supply to **26V/52V**.

1&2: Press the test button “Simulation battery charged” on the Σ-Ahr PWM Controller and check the switching of sub arrays.

Make use of a clamp meter to check the switching of sub arrays.

2&3: Press the test button “Simulation battery discharged” on the Σ-Ahr PWM Controller and check the disconnection of the load. The load shall disconnect when the “Load disconnected” alarm is activated LED “ON”.

Connect the resistor bank to the load output terminals and check the status of the LED indicator.

#	Σ-Ahr Controller(s) test buttons/connections		Check OK
	Description	Limits/conditions/remarks	
1	Test button “Simulation battery charged”	All sub arrays disconnected LED’s “ON” (e.g. no current from sub arrays to system)	<input type="checkbox"/>
2	Test button release	All sub arrays disconnected LED’s “OFF” (e.g. current from sub arrays to system)	<input type="checkbox"/>
3	Test button “Simulation battery discharged”	After 10 sec. “Low battery voltage” and “Load disconnected” LED “ON” (load should be disconnected).	<input type="checkbox"/>
4	Test button release	“Low battery voltage” and “Load disconnected” LED “OFF” (load is automatically reconnected).	<input type="checkbox"/>

Perform the switching of the controller/extension(s) as described below.

Make use of a clamp meter to check the individual switching of sub arrays input and load output. For this test, set the power supply that simulates the solar modules at approximately **35V - 5A/70V - 2.5A**. Connect the load bank to simulate the load, approximately 10A.

Make use of the power supply that simulates the battery for controlling the switching of sub arrays and load by Σ-Ahr PWM Controller(s).

The following conditions shall be met:

- Sub array disconnected (LED “ON”) then sub array current = 0A
- Sub array connected (LED “OFF”) then sub array current = simulated current
- Low battery voltage (LED “ON”) then non-essential load disconnected **(if applicable)**, load current = 0A
- Load disconnected (LED “ON”) then essential load disconnected, load current = 0A
- Low battery & Load disconnected (LED’s “ON”) then load current = simulated current

#	Input/output	Controller	Extension 1	Extension 2	Check OK
1	Sub array 1 [A]				<input type="checkbox"/>
2	Sub array 2 [A]				<input type="checkbox"/>
3	Sub array 3 [A]				<input type="checkbox"/>
4	Load non-essential [A]				<input type="checkbox"/>
5	Load essential [A]				<input type="checkbox"/>

5.4 Circuit breaker and switch functional check

Perform the following functional checks for circuit breakers as described below.

#	Description	Limits/conditions/remarks	Check OK
1	Battery circuit breaker	Operational LED's on Σ -Ahr PWM Controller(s) should be "ON"/"OFF" when battery circuit breaker is ON/OFF.	<input type="checkbox"/>
2	Main outgoing circuit breaker	Check proper operation, power switching and polarity.	<input type="checkbox"/>
3	Individual load circuit breakers	Check proper operation, power switching and polarity.	<input type="checkbox"/>
4	Array switch(es)	Sub array current is interrupted when sub arrays are disconnected manually by operating array switch(es).	<input type="checkbox"/>

5.5 Interchangeability Test

Perform the interchangeability test by removing Σ -Ahr PWM Controller(s) and check by replacing the same with a different unit of the same part number to complete the test.

#	Description	Limits/conditions/remarks	Check OK
1	Σ -Ahr PWM Controller(s)	Remove the unit and replace with a different unit of same part number.	<input type="checkbox"/>

6 Ancillary Functional Checks

In order to verify the functionalities of the ancillary components of the solar energy system a functional check will be performed.

6.1 Transducer functional check

Measure the load voltage transducer and load current transducer output current (4-20mA) in the control box and compare with the simulated battery voltage and simulated battery current. For passive transducer, connect a power supply set at 24V with multi-meter in series to the transducer output terminals.

Check battery voltage transducer (4-20mA) against simulated battery voltage (0-30V)		Remarks	Tolerance	Check OK
Battery voltage [V]		23.0V = 16.27mA	±0.50 mA	<input type="checkbox"/>
		25.5V = 17.60mA		
Battery voltage transducer [mA]		29.0V = 19.47mA		

Check load current transducer (4-20mA) against simulated load current		Remarks	Tolerance	Check OK
Load current [A]		Battery current range is project dependent	±0.50 mA	<input type="checkbox"/>
Load current transducer [mA]				

6.2 Σ -Ahr Graphic Data Manager / Σ -Ahr SmartView functional check

Compare the data as displayed to the simulated values.

#	Description	Limits/conditions/remarks	Check OK
1	Battery voltage [V]	0 - 30V/0 - 60V	<input type="checkbox"/>
2	Battery current [A]	-90 - +134A per Σ -Ahr	<input type="checkbox"/>
3	Battery State of Charge [%]	0-100%	<input type="checkbox"/>
4	Battery temperature [°C]	-20°C up to +70°C	<input type="checkbox"/>
5	Total array current [A]	0 - 134A per Σ -Ahr	<input type="checkbox"/>
6	System output current [A]	0 - 90A per Σ -Ahr	<input type="checkbox"/>

6.3 Alarm relay signals functional check

Modulate the voltage output of the power supply to simulate the battery voltage and check the operation of the alarm relays.

Check the operation on outgoing terminals.

#	Description	Limits/conditions/remarks	Check OK
1	Low battery voltage alarm (pre-warning) <23.00V/<46.00V for NiCd	Low battery voltage alarm relay LED must be "ON".	<input type="checkbox"/>
1	Low battery voltage alarm (pre-warning) <23.60V/<47.20V for Lead-Acid	Low battery voltage alarm relay LED must be "ON".	<input type="checkbox"/>
2	Load disconnected alarm (System low voltage) <21.85V/<43.70V for NiCd	Low battery voltage and load disconnected alarm relay LED's must be "ON".	<input type="checkbox"/>
2	Load disconnected alarm (System low voltage) <23.00V/<46.00V for Lead-Acid	Low battery voltage and load disconnected alarm relay LED's must be "ON".	<input type="checkbox"/>
3	Load disconnected alarm (System high voltage) >31.50V/>63.00V for NiCd	Load disconnected LED must be "ON".	<input type="checkbox"/>

#	Description	Limits/conditions/remarks	Check OK
3	Load disconnected alarm (System high voltage) (>30.50V/>61.00V for Lead-Acid)	Load disconnected LED must be "ON".	<input type="checkbox"/>
4	CPU failure alarm	CPU failure alarm relay LED must be "ON". Switch pos. 6 on the DIP switch towards the PCB and back to simulate the CPU failure alarm. Power cycle the Σ-Ahr Controller to clear the CPU failure alarm.	<input type="checkbox"/>
5	Array failure alarm	Solar array common alarm relay LED must be "ON". Press Test button "Simulation battery charged" to simulate solar array failure.	<input type="checkbox"/>
6	Common alarm	Common alarm relay LED must be "ON".	<input type="checkbox"/>
7	Earth fault alarm	Earth fault alarm relay LED must be "ON". Connect a 560Ω resistance between the positive connection and earth to simulate system earth fault.	<input type="checkbox"/>
8	Feeder tripped summary alarm	Feeder tripped summary alarm relay LED must be "ON".	<input type="checkbox"/>
9	DC-DC Converter fault alarm	At power-up DC-DC converter fault alarm relay LED must be "ON" and check operation on outgoing signal terminals	<input type="checkbox"/>

Note: Time delay for load disconnected alarm and low battery voltage alarm is approximately 10 sec.

6.4 Other functional check

Check the output voltage of the Distribution Box (DB) by simulating the battery voltage level with a power supply.

Check the output voltage of the External Battery Charger (EBC), for this connect the input to a suitable AC supply.

#	Description	Limits/conditions/remarks	Check OK
1	Check DB output voltage	Check DB output voltage range ...V \pm ...%	<input type="checkbox"/>
2	Check EBC output voltage	Force Float (DIP switch 1) 26.5V (24V charger)/53V (48V Charger)	<input type="checkbox"/>

6.5 Dielectric voltage withstand test

The Dielectric Voltage Withstand Test is performed between positive and ground and between negative and ground.

Components connected to earth must be disconnected before starting the test and reconnected again after finishing the test.

#	Enclosures	Limits (insulation resistance)	Value [$M\Omega$]		Check OK
			+/gnd	-/gnd	
1	Sub Array Junction Box (SAJB)	R > 1M Ω			<input type="checkbox"/>
2	Array Combiner Box (ACB)	R > 1M Ω			<input type="checkbox"/>
3	Control Enclosure (CE)	R > 1M Ω			<input type="checkbox"/>
4	Distribution Enclosure (DE)	R > 1M Ω			<input type="checkbox"/>
5	Battery Circuit Breaker Enclosure (BCBE)	R > 1M Ω			<input type="checkbox"/>

Note:

For 24V system (approx. 28V at busbar) test voltage = 50V DC

For 48V system (approx. 56V at busbar) test voltage = 100V DC

8 FAT Approval Summary

The FAT of Solar Energy System control equipment/enclosures has been performed and all parties agreed herewith upon the results.

Description	Tag No. / Article No. / Serial No.	Test results	
		Pass	Fail
Heat Soak Test Σ -Ahr PWM Charge Controller		<input type="checkbox"/>	<input type="checkbox"/>
Control Box (CB)		<input type="checkbox"/>	<input type="checkbox"/>
Battery Circuit Breaker Box (BCB)		<input type="checkbox"/>	<input type="checkbox"/>
Distribution Box (DB)		<input type="checkbox"/>	<input type="checkbox"/>
Array Combiner Box (ACB)/ Sub Array Junction Box (SAJB)		<input type="checkbox"/>	<input type="checkbox"/>

Witnessed by TSS	Witnessed by	Witnessed by
Name:	Name:	Name:
Date:	Date:	Date:
Signature:	Signature:	Signature: