




TSS Ultimate Remote Monitor


TSS Ultimate Remote Monitor is a cloud-based platform built on the latest techniques to proactively monitor, analyse and optimize the performance of your solar and hybrid energy system by ensuring high security to provide a safe, reliable and trustworthy solution. Data available from your TSS system is transferred via Ethernet or GSM to a cloud-based platform using a router with a WAN connection. Real-time data is stored inside the router and, when a connection is available, data is transferred to a secured web portal. This data can be visualized on the cloud-based platform and instant notifications and alarms can be received on a mobile phone and via e-mail.





- 

Ability to stream real time data upon opening live monitor.
Provision to store and forward data in case of loss of connectivity
- 

Receive instant notifications and alarms on a mobile phone and via e-mail when certain thresholds are triggered.
- 

Possibility to view historical data up to 7 years.
- 

Preferred interval can be chosen. High resolution of up to 20 samples per second.
- 

TSS systems are monitored through Modbus TCP/IP, with provision for other protocols, VPN connection, HTTP website porting and VNC access.
- 

Customized report on system performance for predictive and preventive maintenance.

Electrical characteristics

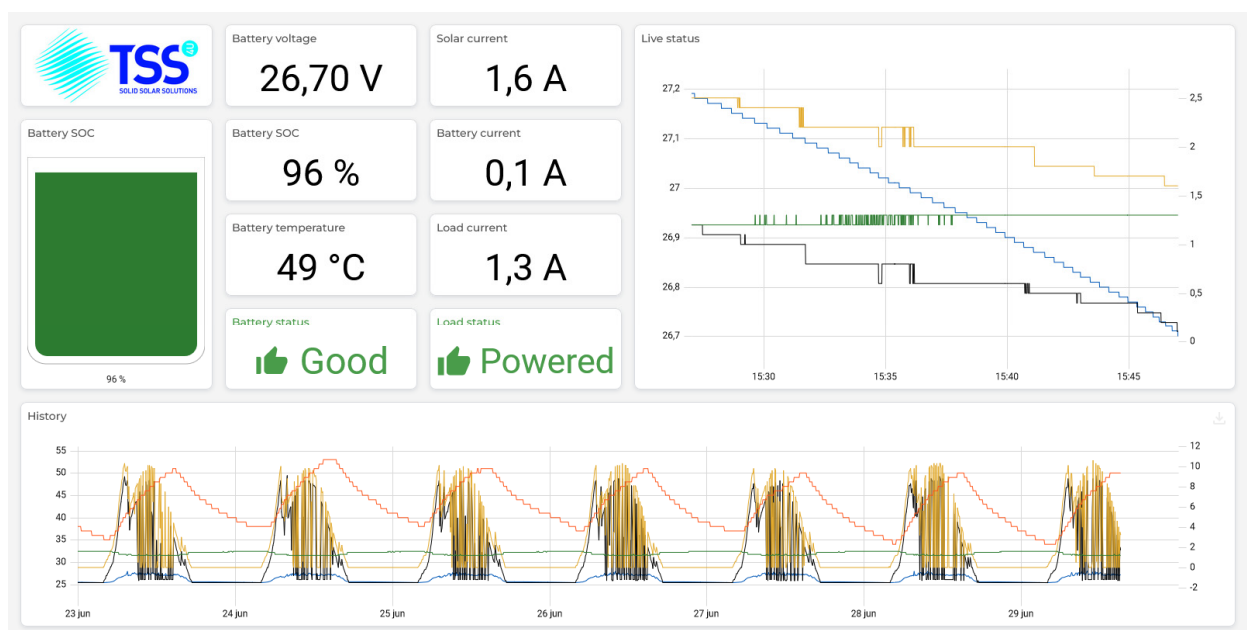
| | |
|-------------------|---------------------|
| Supply voltage | 9.6 - 28.8 Vdc |
| Power dissipation | 5 W idle, 10 W max. |

General specifications

| | |
|-----------------------|--|
| Operating temperature | -20 °C to 65 °C |
| Storage temperature | -20 °C to 65 °C |
| Ethernet ports | 4 LAN, 1 WAN (all 1 Gbps) |
| USB port | USB 2.0 |
| Processor | MIPS 800 MHz |
| Mounting | DIN rail |
| Certifications | CE, cULus listing, FCC verification, NBTC |
| Standards | IEC 60950-1:2006 + A1:2009 + A2:2013 UL 60950-1 CSA C22.2 No. 60950-1-07 |

Additional data

| | |
|----------------------------------|--|
| Protocols | FDD-LTE TDD-LTE WCDMA |
| Protocols (optional) | GSM/GPRS/EDGE - 850, 900, 1800, 1900 MHz |
| GSM antenna (optional) | External on top of enclosure or solar module support |
| SIM size (GSM version) | 2FF (standard SIM card) |
| FCC ID (GSM version) | XMR201903EG25G |
| Router Ethernet article no. | IX2400 |
| Router Ethernet + 4G article no. | IX2405 |
| Dimensions | 11.6 x 2.8 x 9.5 cm (excl. DIN rail clip) |
| Weight | 310 gram |



This datasheet is not legally binding. Actual specifications and / or product features may vary. TSS4U BV reserves the right to make changes to specifications without notice.